

**GLP2R Antibody (Center)**  
**Affinity Purified Rabbit Polyclonal Antibody (Pab)**  
**Catalog # AP14856c**

**Specification**

---

**GLP2R Antibody (Center) - Product Information**

Application	WB,E
Primary Accession	<a href="#">O95838</a>
Other Accession	<a href="#">NP_004237.1</a>
Reactivity	Human
Host	Rabbit
Clonality	Polyclonal
Isotype	Rabbit IgG
Calculated MW	63001
Antigen Region	220-248

**GLP2R Antibody (Center) - Additional Information**

**Gene ID** 9340

**Other Names**

Glucagon-like peptide 2 receptor, GLP-2 receptor, GLP-2-R, GLP-2R, GLP2R

**Target/Specificity**

This GLP2R antibody is generated from rabbits immunized with a KLH conjugated synthetic peptide between 220-248 amino acids from the Central region of human GLP2R.

**Dilution**

WB~~1:1000

E~~Use at an assay dependent concentration.

**Format**

Purified polyclonal antibody supplied in PBS with 0.09% (W/V) sodium azide. This antibody is purified through a protein A column, followed by peptide affinity purification.

**Storage**

Maintain refrigerated at 2-8°C for up to 2 weeks. For long term storage store at -20°C in small aliquots to prevent freeze-thaw cycles.

**Precautions**

GLP2R Antibody (Center) is for research use only and not for use in diagnostic or therapeutic procedures.

**GLP2R Antibody (Center) - Protein Information**

**Name** GLP2R

**Function** This is a receptor for glucagon-like peptide 2. The activity of this receptor is mediated

by G proteins which activate adenylyl cyclase.

#### **Cellular Location**

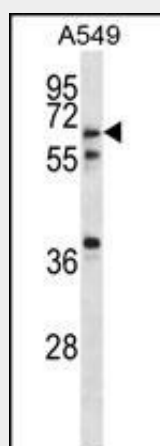
Cell membrane; Multi-pass membrane protein.

### **GLP2R Antibody (Center) - Protocols**

Provided below are standard protocols that you may find useful for product applications.

- [Western Blot](#)
- [Blocking Peptides](#)
- [Dot Blot](#)
- [Immunohistochemistry](#)
- [Immunofluorescence](#)
- [Immunoprecipitation](#)
- [Flow Cytometry](#)
- [Cell Culture](#)

### **GLP2R Antibody (Center) - Images**



GLP2R Antibody (Center) (Cat. #AP14856c) western blot analysis in A549 cell line lysates (35ug/lane). This demonstrates the GLP2R antibody detected the GLP2R protein (arrow).

### **GLP2R Antibody (Center) - Background**

The GLP2 receptor (GLP2R) is a G protein-coupled receptor superfamily member closely related to the glucagon receptor and GLP1 receptor. Glucagon-like peptide-2 (GLP2) is a 33-amino acid proglucagon-derived peptide produced by intestinal enteroendocrine cells. Like glucagon-like peptide-1 (GLP1) and glucagon itself, it is derived from the proglucagon peptide encoded by the GCG gene. GLP2 stimulates intestinal growth and upregulates villus height in the small intestine, concomitant with increased crypt cell proliferation and decreased enterocyte apoptosis. Moreover, GLP2 prevents intestinal hypoplasia resulting from total parenteral nutrition. GLP2R, a G protein-coupled receptor superfamily member is expressed in the gut and closely related to the glucagon receptor (GCGR) and the receptor for GLP1 (GLP1R). [provided by RefSeq].

**GLP2R Antibody (Center) - References**

Bailey, S.D., et al. Diabetes Care 33(10):2250-2253(2010)  
Pinheiro, A.P., et al. Am. J. Med. Genet. B Neuropsychiatr. Genet. 153B (5), 1070-1080 (2010) :  
Rose, J.E., et al. Mol. Med. 16 (7-8), 247-253 (2010) :  
Festen, E.A., et al. Am. J. Gastroenterol. 105(2):395-402(2010)  
Talmud, P.J., et al. Am. J. Hum. Genet. 85(5):628-642(2009)